

**BOOTH 407**

October 26 - 29, 2023



**KOAK**  
*High Noon*, 2022 (22-307)  
Four-color lithograph  
Paper Size: 35 1/2 x 25 3/4 inches  
Paper Type: white Revere suede  
Collaborating Printers: Valpuri Remling and Lindsey Sigmon  
Edition of 20  
\$2,800\*



**HENNI ALFTAN**  
*Dancing Barefoot*, 2021 (21-309)  
Five eight-color lithographs sold as a set and to be displayed in exact sequence  
Paper Size: 26 3/4 x 29 1/4 inches  
Paper Type: Newsprint grey Somerset velvet  
Collaborating Printer(s): Valpuri Remling and Lindsey Sigmon  
Edition of 30  
\$18,000\* (Sold as a set of five, not individually)



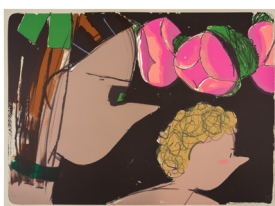
**HENNI ALFTAN**  
*Dancing Barefoot*, 2021 (21-309a)  
Five eight-color lithographs sold as a set and to be displayed in exact sequence  
Paper Size: 26 13/16 x 25 inches  
Paper Type: Newsprint grey Somerset velvet  
Collaborating Printer(s): Valpuri Remling and Lindsey Sigmon  
Edition of 30



**JAUNE QUICK-TO-SEE SMITH**  
*Coyote in Quarantine*, 2020 (20-304)  
Nine-color lithograph  
Paper Size: 26 1/2 x 19 7/8 inches  
Paper Type: white Arches Cover  
Collaborating Printers: Valpuri Remling and Alyssa Ebinger  
Edition of 95  
\$3,500\*



**HENNI ALFTAN**  
*Dancing Barefoot*, 2021 (21-309b)  
Five eight-color lithographs sold as a set and to be displayed in exact sequence  
Paper Size: 26 15/16 x 27 7/16 inches  
Paper Type: Newsprint grey Somerset velvet  
Collaborating Printer(s): Valpuri Remling and Lindsey Sigmon  
Edition of 30



**ELLEN BERKENBLIT**  
*Night Peonies*, 2022 (22-303)  
Eleven-color lithograph  
Paper Size: 25 15/16 x 36 7/8 inches  
Paper Type: gray Rives BFK  
Collaborating Printer(s): Valpuri Remling and Lindsey Sigmon  
Edition of 20  
\$3,000\*



**HENNI ALFTAN**  
*Dancing Barefoot*, 2021 (21-309c)  
Five eight-color lithographs sold as a set and to be displayed in exact sequence  
Paper Size: 26 3/4 x 26 3/8 inches  
Paper Type: Newsprint grey Somerset velvet  
Collaborating Printer(s): Valpuri Remling and Lindsey Sigmon  
Edition of 30



**HENNI ALFTAN**  
*The Next Day*, 2021 (21-314)  
Four-color lithograph  
Paper Size: 45 1/2 x 33 inches  
Paper Type: White Rives BFK  
Collaborating Printer(s): Valpuri Remling and Lindsey Sigmon  
Edition of 30  
\$8,000\*



**HENNI ALFTAN**  
*Dancing Barefoot*, 2021 (21-309d)  
Five eight-color lithographs sold as a set and to be displayed in exact sequence  
Paper Size: 26 15/16 x 27 3/8 inches  
Paper Type: Newsprint grey Somerset velvet  
Collaborating Printer(s): Valpuri Remling and Lindsey Sigmon  
Edition of 30



DANIELLE ORCHARD  
*Tights III*, 2022 (22-502.3)  
Monotype  
Paper Size: 36 x 29 inches  
Paper Type: German Etching Paper,  
tan Rives BFK and Radiant white  
Collaborating Printer(s):Valpuri Remling  
Edition of 1  
\$20,000\*



BRIAN REA  
*FANTASTIC CRAP*, 2022 (22-313)  
One-color lithograph  
Paper Size: 28 x 35 inches  
Paper Type: Soft white somerset satin  
Collaborating Printer(s):Valpuri Remling  
Edition of 30  
\$1,000\*



DANIELLE ORCHARD  
*Still Life with Pizza*, 2022 (22-318)  
One-color lithograph with chine collé  
Paper Size: 14 1/4 x 12 inches  
Paper Type: Soft white Somerset velvet  
and Thai Kozo  
Collaborating Printers: Valpuri Remling,  
Lindsey Sigmon and Julia Marco  
Edition of 15  
\$1,500\*



BRIAN REA  
*UNSTOPPABLE*, 2022 (22-311)  
One-color lithograph  
Paper Size: 28 x 35 inches  
Paper Type: Soft white somerset satin  
Collaborating Printer(s):Valpuri Remling  
Edition of 30  
\$1,000\*



DANIELLE ORCHARD  
*Still Life with Cherries*, 2022 (22-319)  
One-color lithograph with chine collé  
Paper Size: 14 1/4 x 11 1/4 inches  
Paper Type: Soft white Somerset velvet  
and Thai Kozo  
Collaborating Printer(s): Valpuri Remling,  
Lindsey Sigmon and Julia Marco  
Edition of 15  
\$1,500\*



BRIAN REA  
*BEAUTY*, 2022 (22-317)  
One-color lithograph  
Paper Size: 28 x 35 inches  
Paper Type: Soft white somerset satin  
Collaborating Printer(s):Valpuri Remling  
Edition of 30  
\$1,000\*



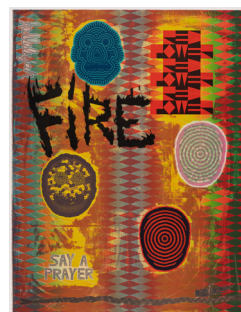
SHINIQUE SMITH  
*Soul Sight*, 2017 (17-321)  
Five-color lithograph with  
three-dimensional element  
Paper Size: 42 x 30 inches  
Paper Type: White Somerset satin and Kozo  
Collaborating Printer(s):Amanda Morris  
Edition of 10  
\$4,500\*



BRIAN REA  
*SUDDENLY/TOO LATE*, 2022 (22-308, 22-308a)  
One-color lithograph (diptych)  
Paper Size: 28 x 35 inches  
Paper Type: Soft white somerset satin  
Collaborating Printer(s):Valpuri Remling  
Edition of 30  
\$2,000\*



BRIAN REA  
*EL SERENO*, 2022 (22-316)  
One-color lithograph  
Paper Size: 28 x 25 inches  
Paper Type: Soft white somerset satin  
Collaborating Printer(s):Valpuri Remling  
Edition of 30  
\$1,000\*



JEFFREY GIBSON  
*SAY A PRAYER*, 2021 (21-306)  
Twenty-one color lithograph with chine  
collé elements  
Paper Size: 39 x 30 1/4 inches  
Paper Type:Thai Kozo, Newsprint grey  
Somerset velvet and Gampi  
Collaborating Printer(s):Valpuri Remling  
and Lindsey Sigmon  
Edition of 20  
\$14,000\*



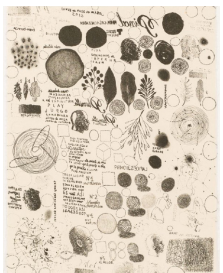
MICHELLE STUART  
*Okuping*, 1974 (74-249A, 249B)  
Four-color lithograph with embossing  
Paper Size: 21 x 14 inches  
Paper Type: White Arches Cover  
Collaborating Printer(s): Glenn Brill, Richard Shore and John Sommers  
Edition of 24  
\$5,000\*



MICHELLE STUART  
*Kuseping*, 1974 (74-248)  
Single-color lithograph with embossing  
Paper Size: 13 3/4 x 13 3/4 inches  
Paper Type: White Arches Cover  
Collaborating Printer(s): David Salgado  
Edition of 24  
\$3,500\*



JOSÉ ANTONIO SUÁREZ LONDOÑO  
*Untitled*, 2015 (15-336)  
Single-color lithograph with chine collé  
Paper Size: 12 x 9 1/2 inches  
Paper Type: Thai Kozo and Warm white  
Revere suede  
Collaborating Printer(s): Bill Lagattuta, Valpuri Remling, Mike Feijen, and Perry Obee  
Edition of 20  
\$900\*



JOSÉ ANTONIO SUÁREZ LONDOÑO  
*Untitled*, 2015 (15-335)  
Single-color lithograph with chine collé  
Paper Size: 12 x 9 1/2 inches  
Paper Type: Thai Kozo and Warm white  
Revere suede  
Collaborating Printer(s): Bill Lagattuta, Valpuri Remling, Mike Feijen, and Perry Obee  
Edition of 20  
\$900\*

Available to view upon request.



JAUNE QUICK-TO-SEE SMITH  
*All of My Relations Book I + II*, 2022  
(22-301, 22-302)  
Two five-color lithographs with chine collé  
Paper Size: 12 x 60 inches  
Collaborating Printer(s): Valpuri Remling  
Edition of 20  
\$10,000\*

 Tamarind  
INSTITUTE

Kylee Aragon Wallis, Gallery Director

tamarind@unm.edu

505.277.3901

\*Price for unframed work(s). All prices subject to change.