

Moeller Fine Art Ltd
7 East 60th Street
New York NY 10022

T. 212-644-2133
F. 212-644-2134

mail@moellerfineart.com
moellerfineart.com

MOELLER
FINEART

COVER IMAGE:



Wassily Kandinsky (1866–1944) | **Portfolio of Kleine Welten (Small Worlds), 1922** | Twelve prints, four lithographs, four woodcuts (two of which merge lithography and woodcut techniques), and four etchings | Each c. 14 1/8 x 11 in. (35.8 x 28 cm) | Dedicated by the artist to Walter Gropius

CONTEXTUAL IMAGE:



7 East 60th Street (entrance at The Metropolitan Club New York)

INTRODUCTION:

Welcome to our online booth. This season, we're excited to feature a selection of fine work by a range of modern masters, including Paul Cézanne, Henri Matisse, Édouard Vuillard, Joan Miró, Fernand Léger, Max Beckmann, and Wassily Kandinsky, among others. Our selection of Beckmann prints, in particular, aligns

Moeller Fine Art Ltd
7 East 60th Street
New York NY 10022

T. 212-644-2133
F. 212-644-2134

mail@moellerfineart.com
moellerfineart.com

with the current exhibition at the Neue Galerie, *Max Beckmann: The Formative Years, 1915–1925*. For more work by the artist, we invite you to visit our recent online viewing room, [Max Beckmann: Printmaker, Draftsman, Painter](#), accompanied by an [online catalogue](#).

Please note that in-person viewings are available [by appointment only](#) at our new home in the annex of The Metropolitan Club New York. Located at 7 East 60th Street, it's the historic address of one of New York's Gilded Age treasures.

**MOELLER
FINEART**

MOELLER FINE ART:

Achim Moeller Ltd., founded in London in June 1972, moved to New York in October of 1984 as Moeller Fine Art Ltd. The gallery specializes in Nineteenth and Twentieth Century masterworks, and regularly organizes museum-quality exhibitions, including “From Daumier to Matisse: French Master Drawings from the John C. Whitehead Collection,” “Howard Wise: Exploring the New,” “Between Friends: Giacomo Balla + Piero Dorazio,” and “Lyonel Feininger + Mark Tobey.” Moeller Fine Art is the foremost gallery in the United States for works by German Expressionists and the Masters of the Bauhaus.

For more than fifty years, Achim Moeller, the gallery's principal, has helped build important and substantial private and public collections that are coherent in concept, period, and quality. Moeller Fine Art also assists individuals and institutions with collection management, insurance valuation, tax and estate planning, and auction representation.

For further information, please contact +1 212 644 2133 or office@moellerfineart.com.

ARTISTS ON VIEW:

Paul Cézanne, Édouard Vuillard, Félix Vallotton, Joan Miró, Fernand Léger, Henri Matisse, Max Beckmann, Otto Dix, George Grosz, Wassily Kandinsky, Lyonel Feininger, Mark Tobey, Henry Moore, Julio Gonzalez, Marisol, Jörg Immendorff, Lucas Samaras

WORKS

Édouard Vuillard (1868–1940)

Marie Vuillard sur sa chaise, penchée
(*Marie Vuillard in Her Chair, Leaning*),
1892

Ink wash on paper
7 1/10 x 9 1/4 in. (18 x 23.5 cm)
Initialed upper right: *ev*



Paul Cézanne (1839–1906)

Sous-bois, c. 1895
Watercolor and pencil on paper
17 1/8 x 12 1/8 in. (43.2 x 30.5 cm)



Félix Vallotton (1865–1925)

Le bain (The Bath), 1894
Woodcut on cream wove paper
Sheet: 8 1/2 x 10 in. (21.6 x 25.4 cm)
Image: 7 x 8 4/5 in. (17.8 x 22.4 cm)
Numbered and signed lower right
in blue crayon: *31 fVallotton*
Initialed lower right in block: *FV*
Titled lower left in block: *LE BAIN*



Fernand Léger (1881–1955)
Vitrail Courfaivre (Stained Glass Window, Courfaivre), c. 1953-1954
Watercolor and ink with pencil on paper
25 5/8 x 9 5/8 in. (65.1 x 24.5 cm)
Initialed lower right: *F.L.*



Henri Matisse (1869–1954)
Head with Shawl, 1945
Pencil on paper
10 1/2 x 13 1/4 in. (26.7 x 33.7 cm)
Signature stamp and dated lower left, applied by Pierre Matisse, the artist's son



Joan Miró (1893–1983)
Couple d'amoureux et oiseau dans la nuit (Loving Couple and Bird at Night), 1970
Ink and crayon on paper
25 3/4 x 19 1/2 in. (65.4 x 50 cm)
Signed lower right: *Miró*



Max Beckmann (1884–1950)

Selbstbildnis von vorn, im Hintergrund Hausgiebel (Frontal Self-Portrait with House Gable in Background), 1918

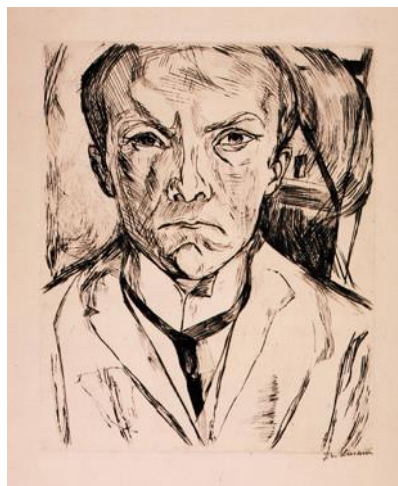
Drypoint on paper

Sheet: 20 3/4 x 15 in. (52.6 x 38 cm)

Image: 12 x 10 1/8 in. (30.5 x 25.6 cm)

Signed lower right: *Beckmann*

Titled lower right: *Selbstportrait*



Otto Dix (1891–1969)

Leonie, 1923

Color lithograph on paper

Sheet: 23 1/5 x 18 3/10 in. (59 x 46.5 cm)

Image: 18 3/4 x 14 7/8 in. (47.6 x 37.7 cm)

Signed and dated lower right: *DIX 23*

Numbered lower left: *9/65*

Titled lower right: *“Leonie”*

Numbered lower right: *13*



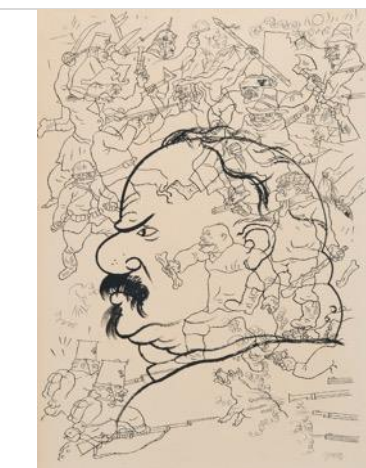
George Grosz (1893–1959)

“Tatarin’s Traum” zu “Die Abenteuer des Herrn Tatarin aus Tarascon” von A. Daudet (“Tatarin’s Dream” for “The Adventures of Mr. Tatarin from Tarascon” by A. Daudet), 1921

Ink on paper

19 5/8 x 12 7/8 in. (50 x 32.6 cm)

Signed lower right: *GROSZ*



Wassily Kandinsky (1866–1944)

Portfolio of Kleine Welten (Small Worlds),
1922

Twelve prints, four lithographs, four
woodcuts (two of which merge
lithography and woodcut techniques),
and four etchings

Each c. 14 1/8 x 11 in. (35.8 x 28 cm)

Each initialed and dated lower
left: *VK* or *VK 22*

Each signed lower right: *Kandinsky*
Title page inscribed lower left: *Walter
und Ilse [sic] Gropius zum Andenken an d.
16. X 23 herzlichst Kandinsky Weimar*

**Presenting the complete portfolio,
individual prints are not offered
separately**



Mark Tobey (1890–1976)

Animal in Motion, 1959

Tempera on cardboard

8 1/4 x 13 1/2 in. (21 x 34.3 cm)

Signed and dated lower right: *Tobey 59*



Lyonel Feininger (1871–1956)

Pariser Strasse (Street in Paris), 1915

Watercolor, ink, and charcoal on
paper

11 7/8 x 8 7/8 in. (30.2 x 22.6 cm)

Signed lower left: *Feininger*

Dated lower right: *Dienst. d. 21. Dez.
1915*

Titled lower center: *PARISER
STRASSE*

Inscribed bottom left: *X*



Henry Moore (1898–1986)
Seated Female Figure, 1928
Pen and ink, chalk on paper
20 x 14 1/2 in. (50.8 x 36.9 cm)
Signed lower right: *Moore*



Julio Gonzalez (1876-1942)
Etude pour homme cactus, 1939
Ink and watercolor on paper
14 1/2 x 10 1/4 in. (36.8 x 26 cm)
Dated and initialed lower left: 2-12-39
j.G.



Henry Moore (1898–1986)
Standing Nude, c. 1927
Chalk and wash on paper
18 1/2 x 12 in. (47.0 x 30.5 cm)
Signed lower left: *Moore*



Marisol (1930–2016)

The Family, 1957

Crayon and graphite on paper

14 x 9 1/2 in. (35.6 x 24.1 cm)

Signed and dated lower right:

MARISOL 1957



Jörg Immendorff (1945–2007)

Untitled, 1978

Acrylic on paper

23 x 18.5 in. (58.4 x 47 cm)

Signed lower right



Lucas Samaras (b. 1936)

Untitled (Self-Portrait), June 27,
1961

Pastel on paper

12 x 9 in. (30.5 x 22.8 cm)

