

isselbacher gallery

64 East 86th Street, New York, NY 10028 917-509-7833 isselbacherart@aol.com

IFPDA PRINT FAIR, OCTOBER 26-29, 2023

In ASSOCIATION with Timothy Baum

Marc CHAGALL (1887-1985)

Les Cyclistes

Lithograph, 1956

One of 30 signed and numbered examples

Image size: 26 x 19 13/16 inches

Reference: Mourlot 171



Paul CITROEN (1896-1983)

Metropolis

Lithograph, printed in color, 1972 (the image is a recreation of a collage from the artist's Dada period, fifty years earlier)

One of 100 signed and numbered examples

Image size: 22 3/8 x 17 1/4 inches



Salvador DALÍ (1904-1989)

La Gastronomie Surréaliste

Drypoint and lithograph, printed in color, 1971

Artist's proof, aside from the edition of 175 presented in the series *Memories of Surrealism*; signed and inscribed "EA," and additionally with the blind stamp of the artist's signature

Image size: 20 13/16 x 16 3/8 inches

Reference: Michler/Löpsinger 505



Jean DUBUFFET (1901-1985)

Jeux et travaux

Lithograph, printed in color, 1953

One of 60 signed and numbered examples

Image size: 26 x 19 3/4 inches

Reference: Webel 385



Marcel DUCHAMP (1887-1968)

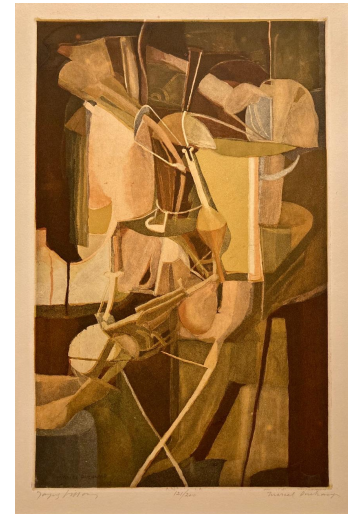
La Mariée

Aquatint, engraved by his brother, Jacques Villon, and printed in color, 1934

One of 200 examples signed by both Duchamp and Villon

Image size: 19 1/2 x 12 1/4 inches

Reference: Ginestet/Pouillon E 672



Max ERNST (1891-1976)

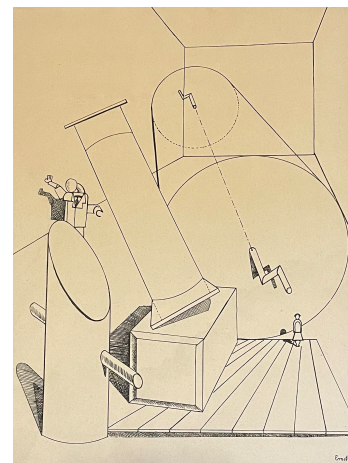
Fiat Modes pereat ars (Plate V)

Lithograph, 1919

Plate V (of eight) from the very rare, Dada period album, printed by the artist himself and signed in the plate at the lower right corner; from one of approximately thirty extant sets (from a somewhat larger edition, of which all the remaining sets perished in a fire)

Sheet size: 17 1/8 x 12 7/16 inches

Reference: Spies/Leppien 7/V



Max ERNST (1891-1976)

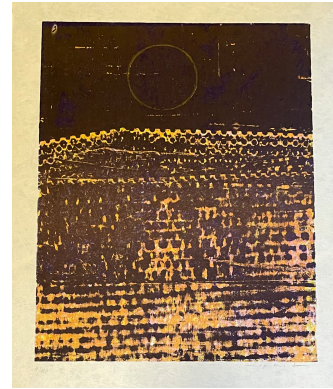
La Ville entière

Lithograph, printed in color, on Japon nacré paper, 1968

One of 100 signed and numbered examples,
published by Gerd Hate, Stuttgart

Image size: 12 x 9 1/2 inches

Reference: Spies/Leppien 127



Leonor FINI (1907-1996)

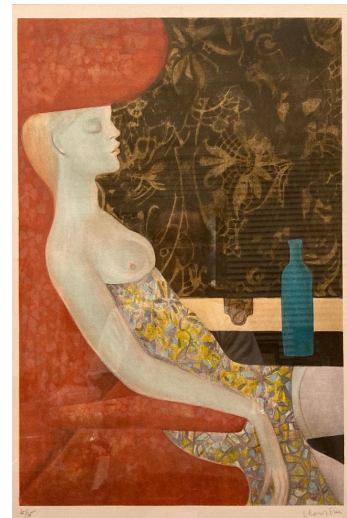
La Nuit vaincu

Lithograph, printed in color, 1967

One of 75 signed and numbered examples

Image size: 22 5/8 x 15 inches

Illustrated in *Surrealist Prints*, Harry N. Abrams Inc.,
New York, 1997, plate 59



Valentine HUGO (1890-1968)

Visage autumnal

Etching and aquatint, printed in color, 1965

One of 50 signed and numbered examples

Image size: 8 1/4 x 6 13/16 inches



Wifredo LAM (1902-1982)

Quetzal

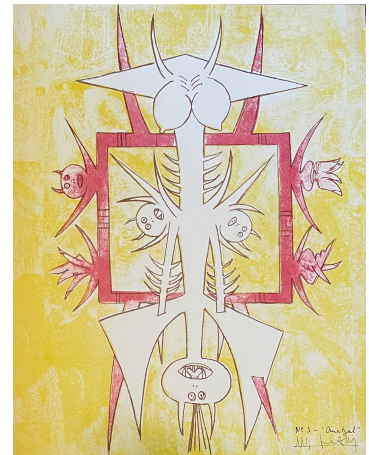
Lithograph, printed in color, 1947

From an edition of 80 signed and numbered examples, 70 of which were published in the portfolio *Brunidor Portfolio, No. 1*, (published by Brunidor Editions, New York), and 10 were reserved for the artist; this is one of the 10 copies reserved for the artist

Image size: 16 1/2 x 13 inches

Reference: Tonneau-Ryekelynck/Dron 4701

Note: This is the first lithograph (and first color print) by Lam.



Marie LAURENCIN (1883-1956)

Le Ballet

Etching with extensive hand-coloring in watercolor, on laid paper, 1912

Signed, dated and dedicated in pencil:

“à Jane Martin bien affectueusement M-L”

Image size: 7 3/4 x 9 3/4 inches

Reference: Marchesseau 21



Fernand LÉGER (1881-1955)

Composition aux deux personnages

Lithograph, 1920

One of 125 signed examples from the portfolio

Die Schaffenden, no. 4, 1920, published by

Gustave Kiepenheuer, Weimar

Image size: 11 1/4 x 9 3/8 inches

Reference: Sapphire 2



René MAGRITTE (1898-1967)

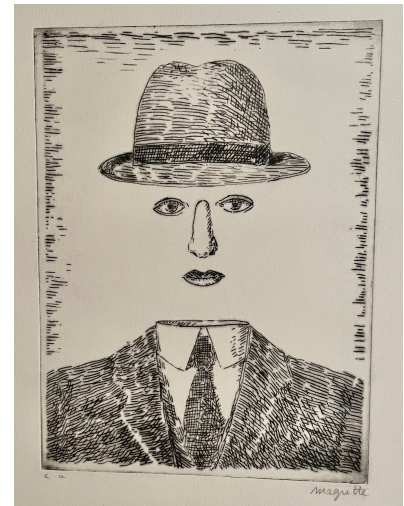
Paysage de Baucis

Etching, 1966

Artist's proof, signed and annotated "e.a.,"
aside from the numbered edition of 100,
published by Éditions Georges Visat, Paris

Image size: 8 15/16 x 6 5/8 inches

Reference: Kaplan/Baum 5



MAN RAY (1890-1976)

Kiki allongée

Etching and aquatint, on Consan bleu paper, 1971

From an edition limited to 50 numbered examples
and 5 additional artist's proofs numbered in
Roman numerals; this is one of the artist's proof
examples, numbered at the lower left

Image size: 11 7/8 x 16 1/2 inches

Reference: Anselmino 51



Henri MATISSE (1869-1954)

Nu de face, jambe droite repliée

Etching, on "Chine appliqué" paper, 1929

One of 25 signed and numbered examples

Image size: 5 3/4 x 4 1/4 inches

Reference: Duthuit 199



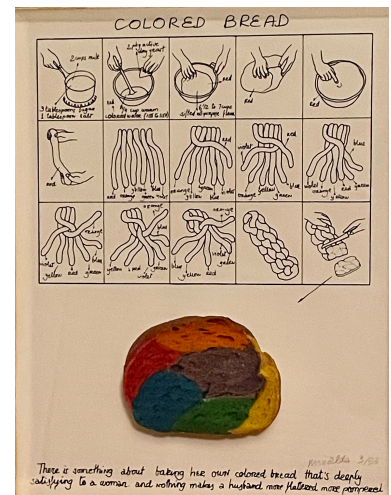
Antoni MIRALDA (born 1942)

Colored Bread

Offset printed text on light card stock with original object affixed to the lower portion of the sheet, contained in a plexiglas box designed by the artist, 1973

One of 33 signed and numbered examples

Box size: 14 5/16 x 11 3/8 x 2 3/4 inches



Joan MIRÓ (1893-1983)

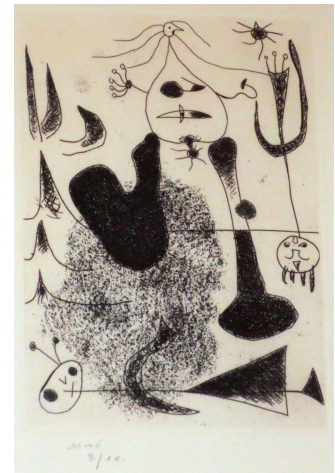
Sablier couché

Etching, 1938

One of ten signed and numbered examples printed in black (there was also an edition of 75 printed in red), printed by Louis Marcoussis, Paris and published by Éditions Sagesse, Paris

Image size: 5 3/8 x 3 7/8 inches

Reference: Dupin 21



Joan MIRÓ (1893-1983)

Untitled from *Au Paradis des fantômes*

Drypoint and aquatint, printed in color, on Montval blue paper, 1938

One of 15 signed and numbered examples, published by H. Parisot, Paris

Image size: 6 x 4 1/2 inches

Reference: Dupin 41; see Cramer books 7



Robert MOTHERWELL (1915-1991)

St. Michael III

Lithograph and screenprint, printed in color,
on gray handmade HMP paper, 1979
One of 99 signed and numbered examples, published
by Tyler Graphics, Ltd., Bedford Village, New York
Reference: Engberg/Banach 237



Pablo PICASSO (1881-1973)

Deux Buveurs Catalans from *La Suite Vollard*

Etching, on laid, Montval paper with the
“Picasso” watermark, 1934

Signed example from the edition of 260,
published by Ambroise Vollard, Paris
Image size: 9 3/8 x 11 5/8 inches
Reference: Bloch 228. Baer 442



James ROSENQUIST (1933-2017)

Somewhere to Light

Screenprint, printed in two colors, 1966
One of 225 signed and numbered examples
from the series *New York International*,
published by Tanglewood Press, Inc., New York
Image size: 16 15/16 x 22 1/16 inches
Reference: Schmidt/Anderson 16



Georges ROUAULT (1871-1958)

Nu de profil from *Les Fleurs du mal*

Aquatint, printed in color, 1938

One of 250 examples, commissioned by Ambroise Vollard, Paris, and released by Roger Lacourière, Paris, following Vollard's death in 1939

Image size: 12 ¼ x 8 ¼ inches

Reference: Chapon/Rouault 274



Cindy SHERMAN (born 1954)

Under the WTC (The Arrival)

Gelatin silver print: 1980 image, printed in 2001

One of 100 numbered copies

Signed, numbered, dated and titled in pencil on the verso

Image size: 7 7/16 x 5 1/2 inches



Henri de TOULOUSE-LAUTREC (1864-1901)

Carnaval

Lithograph, printed in two colors, 1894

Edition of 100 signed examples, some of which are numbered; this copy is signed and numbered in the lower left corner

Published by *La Revue Blanche*, Paris

Image size: 10 11/16 x 8 3/16 inches

Reference: Wittrock 61



Jacques VILLON (1875-1963)

Le Banc de pierre or *Au jardin*

Drypoint, 1908

One of 20 signed and numbered examples

Image size: 21 3/8 x 16 1/2 inches

Reference: Ginestet/Pouillon 236

Note: The image depicts Suzanne Duchamp, sister of the artist, Jacques Villon, and his brothers Marcel Duchamp and Raymond Duchamp-Villon.

