

## 2023 IFPDA Print Fair

October 26 – 29, 2023  
Booth #112

### SANFORD BIGGERS



**Sanford Biggers (b. 1970, American)**

*Psyche*, 2009-2011

Lithograph with hand sewn thread

Paper: 43.25 x 25.5 inches

Frame: 51 x 33.5 inches

Edition 2 of 30

Big-0035-CO

Published by Goya Contemporary / Goya-Girl Press

### DAVID BROWN



**David Brown (b. 1971, American)**

*Untitled (#8 From the River Series)*, 2011

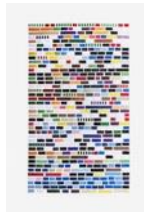
Unique, enamel on printed black ground

Paper: 30 x 40 inches

Frame: 36 x 46 inches

Brow-0024-C

### SONYA CLARK



**Sonya Clark (b. 1967, American)**

*The Huest Eye*, 2023

Embroidered thread on Rives BFK paper

36 x 24 inches

Edition of 12

Published by Goya Contemporary / Goya-Girl Press



**Sonya Clark (b. 1967, American)**

*The Bluest, Twisted*, 2023

Lithograph on Rives BFK paper

36 x 24 inches

Edition of 30

Published by Goya Contemporary / Goya-Girl Press



**Sonya Clark (b. 1967, American)**

*Our Constellations Ourselves*, 2022

Mixed media, graphite, and hand puncturing on paper

11.5 x 16.5 inches

Clar-1068-C



**Sonya Clark (b. 1967, American)**

*Minding Edges*, 2018

Gouache on paper

11 x 15 inches

Clar-1066-C

## 2023 IFPDA Print Fair

October 26 – 29, 2023  
Booth #112



**Sonya Clark (b. 1967, American)**  
*Palm Maps*, 2004  
Graphite, inked hand stamp, and collage on paper  
10.5 x 7.5 inches  
Clar-1065-C



**Sonya Clark (b. 1967, American)**  
*Conceiving Language*, 2019  
Ink on paper  
12 x 9 inches  
Clar-1064-C



**Sonya Clark (b. 1967, American)**  
*Traced and Rubbed*, 2014  
Graphite on paper  
12 x 9 inches  
Clar-1063-C



**Sonya Clark (b. 1967, American)**  
*Lift Ev'ry Voice and Sing*, 2021  
Pigment print on piano paper  
Diptych, paper size: 11.25 x 15 inches each  
Edition 20 of 20  
Clar-1046-C



**Sonya Clark (b. 1967, American)**  
*Unbreakable*, 2014  
Oil stick rubbing on polyester  
12 x 12 inches each  
Installation variable, approx. 12 x 120 inches  
Clar-1016-C

### JJ CROMER



**JJ Cromer (b. 1967, American)**  
*Asterisk Man (Alobumen)*, 2008  
Paint on board  
Board: 20 x 15 inches  
Frame: 25.38 x 20.38 inches  
Crom-1001-O

## 2023 IFPDA Print Fair

October 26 – 29, 2023  
Booth #112

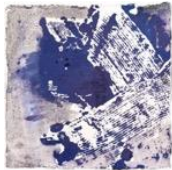


**JJ Cromer (b. 1967, American)**  
*It Passed Out of South, Moving South, 2011*  
Paint on board  
Board: 28 x 14 inches  
Frame: 38 x 24 inches  
Crom-1000-O

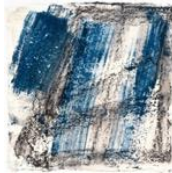
### LOUISE FISHMAN



**Louise Fishman (b. 1939 - d. 2021, American)**  
*Untitled, 1990-2010*  
Watercolor on paper  
11 x 15.06 inches  
Fish-1084-C



**Louise Fishman (b. 1939 - d. 2021, American)**  
*Untitled, 2016*  
Watercolor on paper  
8.25 x 8.25 inches  
Fish-1083-C



**Louise Fishman (b. 1939 - d. 2021, American)**  
*Untitled, 2016*  
Watercolor on paper  
8.38 x 8.38 inches  
Fish-1082-C



**Louise Fishman (b. 1939 - d. 2021, American)**  
*Untitled, 2016*  
Watercolor on paper  
9 x 9 inches  
Fish-1081-C



**Louise Fishman (b. 1939 - d. 2021, American)**  
*Untitled, 2016*  
Watercolor on paper  
9 x 9 inches  
Fish-1080-C



**Louise Fishman (b. 1939 - d. 2021, American)**  
*Untitled, 2017*  
Watercolor on paper  
5 x 7.13 inches  
Fish-1079-C

## 2023 IFPDA Print Fair October 26 – 29, 2023 Booth #112



**Louise Fishman (b. 1939 - d. 2021, American)**  
*Untitled*, 1978  
Mixed media on paper  
22.25 x 14.88 inches  
Fish-1078-C



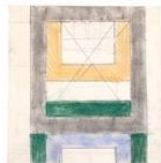
**Louise Fishman (b. 1939 - d. 2021, American)**  
*Untitled*, 1998  
Watercolor on paper  
11 x 15.13 inches  
Fish-1077-C



**Louise Fishman (b. 1939 - d. 2021, American)**  
*Untitled*, 1978  
Mixed media on paper  
22.25 x 15.25 inches  
Fish-1076-C



**Louise Fishman (b. 1939 - d. 2021, American)**  
*Untitled*, 1998  
Mixed media on paper  
20.25 x 30.25 inches  
Fish-1075-C



**Louise Fishman (b. 1939 - d. 2021, American)**  
*Untitled*, 1968  
Pastel and pencil on paper  
7.75 x 7.5 inches  
Fish-1074-C



**Louise Fishman (b. 1939 - d. 2021, American)**  
*Untitled*, 2001  
Mixed media on paper  
11 x 8.5 inches  
Fish-1072-C



**Louise Fishman (b. 1939 - d. 2021, American)**  
*Untitled*, 1983  
Watercolor on paper  
15.88 x 11.75 inches  
Fish-1069-C



**Louise Fishman (b. 1939 - d. 2021, American)**  
*Untitled*, 1986  
Oil on paper  
14.75 x 10.75 inches  
Fish-1068-C

## 2023 IFPDA Print Fair

October 26 – 29, 2023  
Booth #112



**Louise Fishman (b. 1939 - d. 2021, American)**

*Untitled*, 2001  
Mixed media on paper  
11 x 8.5 inches  
Fish-1067-C

**SOLD**



**Louise Fishman (b. 1939 - d. 2021, American)**

*Untitled*, 2001  
Mixed media on paper  
11 x 8.5 inches  
Fish-1071-C

### FRANCISCO DE GOYA



**Francisco de Goya (b. 1746-d. 1828, Spanish)**

*A bad night (Mala noche)*, 1799  
Etching with burnished aquatint, drypoint and engraving, on  
laid paper  
Sheet: 11.75 x 8 inches  
Frame: 14.5 x 11 inches  
Goya-1000-C

### TRACE MILLER



**Trace Miller (b. 1955, American)**

*Paper Forest Series #7*, 2020  
Acrylic and mixed media collage on paper  
Paper: 12.5 x 10.5 inches  
Frame: 15.13 x 13.13 inches  
Miller-1024-C



**Trace Miller (b. 1955, American)**

*Paper Forest Series #13*, 2020  
Mixed media collage on paper  
Paper: 12.5 x 10.5 inches  
Frame: 15.13 x 13.13 inches  
Miller-1030-C



**Trace Miller (b. 1955, American)**

*Paper Forest Series #18*, 2020  
Mixed media collage on paper  
Paper: 12.5 x 10.5 inches  
Frame: 15.13 x 13.13 inches  
Miller-1035-C

## 2023 IFPDA Print Fair

October 26 – 29, 2023  
Booth #112



**Trace Miller (b. 1955, American)**  
*Ponds Edge*, 2018  
Mixed media collage on board  
Paper: 8.5 x 9.5 inches  
Frame: 13.5 x 14.5 inches  
Miller-1009-C

### LILIANA PORTER



**Liliana Porter (b. 1941, Argentine)**  
*Untitled*, 2012  
Lithograph  
Paper: 22 x 15 inches each  
Frame: 27.25 x 20.25 inches each  
AP edition of 20  
Port-1005-C

### SOLEDAD SALAMÉ



**Soledad Salamé (b. 1954, Chilean)**  
*Fast Fashion Atacama*, 2023  
Archival print on canvas with hand embroidery  
60 x 38 inches  
Varied edition 1 of 5  
Sala-1311-C



**Soledad Salamé (b. 1954, Chilean)**  
*Fast Fashion in Color I*, 2022  
Hand colored and collaged monoprint  
Paper: 22 x 30 inches  
Frame: 28.75 x 34.25 inches  
AP Edition 1 of 1  
Sala-1307-C

### FANNY SANÍN



**Fanny Sanín (b. 1938, Columbian)**  
*Study for Painting No. 3(8)*, 1997  
Acrylic on paper  
Frame: 18 x 22 inches  
Sani-1012-C



**Fanny Sanín (b. 1938, Columbian)**  
*Study for Painting No. 1(3)*, 2002  
Acrylic on paper  
Frame: 18.75 x 22.75 inches  
Sani-1004-C



**2023 IFPDA Print Fair**  
**October 26 – 29, 2023**  
**Booth #112**

JOYCE J. SCOTT



**Joyce J. Scott (b. 1948, American)**

*Biggie, Faith + Lil' Kim from the Book of the Dead Series*, 2018

Monoprint

Paper: 15 x 22 inches

Frame: 18 x 26.75 inches

Scot-1178-C

Published by Goya Contemporary / Goya-Girl Press



**Joyce J. Scott (b. 1948, American)**

*Hip Hop Saints and Fallen Angels: Easy E*, 2014

Monotype

Print: 13.5 x 12.5 inches

Frame: 18 x 17.75 inches

Scot-1052-C

Published by Goya Contemporary / Goya-Girl Press



**Joyce J. Scott (b. 1948, American)**

*Hip Hop Saints and Fallen Angels: Foxy Brown*, 2014

Monotype

Print: 20.75 x 13.75 inches

Frame: 27.5 x 20 inches

Scot-1048-C

Published by Goya Contemporary / Goya-Girl Press



**Joyce J. Scott (b. 1948, American)**

*Hip Hop Saints and Fallen Angels: Lil Kim*, 2014

Monotype

Print: 19.75 x 17.5 inches

Frame: 24.5 x 22 inches

Scot-1069-C

Published by Goya Contemporary / Goya-Girl Press



**Joyce J. Scott (b. 1948, American)**

*Hip Hop Saints and Fallen Angels: Notorious BIG*, 2014

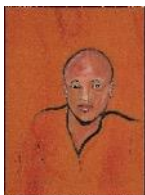
Monotype

Print: 20 x 12 inches

Frame: 25.25 x 17.5 inches

Scot-1059-C

Published by Goya Contemporary / Goya-Girl Press



**Joyce J. Scott (b. 1948, American)**

*Hip Hop Saints and Fallen Angels: Criss Cross*, 2014

Monotype

Print: 12 x 10.25 inches

Frame: 17 x 15.5 inches

Scot-1058-C

Published by Goya Contemporary / Goya-Girl Press

## 2023 IFPDA Print Fair

October 26 – 29, 2023  
Booth #112



**Joyce J. Scott (b. 1948, American)**  
*Hip Hop Saints and Fallen Angels: ODB*, 2014  
Monotype  
Print: 12 x 9 inches  
Frame: 17 x 14 inches  
Scot-1056-C  
Published by Goya Contemporary / Goya-Girl Press



**Joyce J. Scott (b. 1948, American)**  
*Hip Hop Saints and Fallen Angels: Heavy D*, 2014  
Monotype  
Print: 11.5 x 11.5 inches  
Frame: 16.75 x 16.5 inches  
Scot-1054-C  
Published by Goya Contemporary / Goya-Girl Press



**Joyce J. Scott (b. 1948, American)**  
*Hip Hop Saints and Fallen Angels: Big Pun*, 2014  
Monotype  
Print: 14 x 10 inches  
Frame: 19.25 x 15.25 inches  
Scot-1051-C  
Published by Goya Contemporary / Goya-Girl Press



**Joyce J. Scott (b. 1948, American)**  
*Untitled*, 1991  
Monoprint  
Paper: 41 x 29 inches  
Frame: 47 x 35 inches  
Scot-1164-C



**Joyce J. Scott (b. 1948, American)**  
*Untitled*, 2008  
Monoprint  
Paper: 30 x 22 inches  
Frame: 35.25 x 27.5 inches  
Scot-1162-C



**Joyce J. Scott (b. 1948, American)**  
*Partners*, 2008  
Monoprint  
Paper: 30 x 22 inches  
Frame: 35.25 x 27.5 inches  
Scot-1161-C



## 2023 IFPDA Print Fair October 26 – 29, 2023 Booth #112



**Joyce J. Scott (b. 1948, American)**

*Hell's Angel, 2000*

Monoprint from the Soul Erased Series with hand work on  
Rives BFK paper

Paper: 30 x 22 inches

Frame: 33.5 x 25.5 inches

Scot-1094-C

Published and printed at Goya Contemporary / Goya-Girl Press



**Joyce J. Scott (b. 1948, American)**

*Obama Purple Haze, 2012*

Monoprint from the Obama Series on paper

Print: 30 x 22 inches

Frame: 34.5 x 24.5 inches

Scot-1028-C

Published by Goya Contemporary / Goya-Girl Press



**Joyce J. Scott (b. 1948, American)**

*Obama Offset, 2012*

Monoprint from the Obama Series on paper

Print: 30 x 22 inches

Frame: 35 x 25.25 inches

Scot-1007-C

Published by Goya Contemporary / Goya-Girl Press



**Joyce J. Scott (b. 1948, American)**

*Soul Erased, 1999*

Portfolio of six lithographs with screen printing, embossing,  
and hand work

Each print: 30 x 22 inches

Edition 7 of 20

SCO-0072-CO

Published and printed at Goya Contemporary / Goya-Girl Press



**Joyce J. Scott (b. 1948, American)**

*Jumped Overboard, 2023*

Glass beads, wire, thread

26 x 14.5 inches

Scot-1283-C



**Joyce J. Scott (b. 1948, American)**

*Hide, 2023*

Glass beads, wire, thread

28.5 x 13 inches

Scot-1280-C

## 2023 IFPDA Print Fair

October 26 – 29, 2023  
Booth #112



**Joyce J. Scott (b. 1948, American)**

*The Collector*, 2022

Diptych: glass beads, thread, wire

Installed: 20 x 11 x 3 inches

Wall piece: 14.75 x 6 inches

Seated figure: 9 x 5.5 x 3 inches

Scot-1236-O

ALAN SHIELDS



**Alan Shields (b. 1944 - d. 2005, American)**

*The Incestuous Kids*, 1973

Printed on Arches Cover, in dyeing, relief printing, lithograph, serigraph, flocking and glitter, some with die-cutting, stitching and collage by stitching

Each print: 8 x 8 inches

Edition 17 of 25

Shie-1000-C



**Alan Shields (b. 1944 - d. 2005, American)**

*Gas-Up*, 1984

Woodcut, etching, aquatint, relief, knotting, collage on handmade paper

Paper: 56.5 x 40.5 inches

Frame: 60 x 43.5 inches

Edition 20 of 46

Shie-1002-C

JO SMAIL



**Jo Smail (b. 1943, South African)**

*The Alhambra*, 2020

Archival pigment print

Paper: 24.5 x 23.5 inches

Frame: 28.5 x 27.5 inches

Edition 1 of 5

Smai-1347-C

Published by Goya Contemporary / Goya-Girl Press



**Jo Smail (b. 1943, South African)**

*The Caress*, 2020

Archival pigment print

Paper: 24.5 x 23.5 inches

Frame: 28.5 x 27.5 inches

Edition 1 of 5

Smai-1389-C

Published by Goya Contemporary / Goya-Girl Press

## 2023 IFPDA Print Fair

October 26 – 29, 2023  
Booth #112



**Jo Smail (b. 1943, South African)**

*Pattern Evokes Origins*, 2020

Archival pigment print

Paper: 24.5 x 23.5 inches

Frame: 28.5 x 27.5 inches

Edition 1 of 5

Smai-1365-C

Published by Goya Contemporary / Goya-Girl Press



**Jo Smail (b. 1943, South African)**

*A Tuft of Grass*, 2020

Archival pigment print

Paper: 24.5 x 23.5 inches

Frame: 28.5 x 27.5 inches

Edition 1 of 5

Smai-1343-C

Published by Goya Contemporary / Goya-Girl Press



**Jo Smail (b. 1943, South African)**

*Smiles are Spreading*, 2020

Archival pigment print

Paper: 24.5 x 23.5 inches

Frame: 28.5 x 27.5 inches

Edition 1 of 5

Smai-1333-C

Published by Goya Contemporary / Goya-Girl Press



**Jo Smail (b. 1943, South African)**

*Jelly Fish Space*, 2020

Archival pigment print

Paper: 24.5 x 23.5 inches

Frame: 28.5 x 27.5 inches

Edition 1 of 5

Smai-1328-C

Published by Goya Contemporary / Goya-Girl Press



**Jo Smail (b. 1943, South African)**

*Prints from the Bees with Sticky Feet Series*, 2020

Archival pigment print

24.5 x 23.5 inches each

Edition of 5

Published by Goya Contemporary / Goya-Girl Press



**Jo Smail / William Kentridge**

*Collaboration #10*, 2005

Mixed media on paper

Paper: 15 x 22 inches

Frame: 19.75 x 26 inches

SmKe-1004-C

## 2023 IFPDA Print Fair October 26 – 29, 2023 Booth #112



**Jo Smail (b. 1943, South African)**

*Nesting #1, 2023*

Archival pigment print, collage, acrylic paint, sumi ink

15 x 12 inches

Smai-1557-C



**Jo Smail (b. 1943, South African)**

*Nesting #2, 2023*

Archival pigment print, collage, marker, ink

15 x 12 inches

Smai-1558-C



**Jo Smail (b. 1943, South African)**

*Nesting #3, 2023*

Archival pigment print, collage, ink

15 x 12 inches

Smai-1559-C



**Jo Smail (b. 1943, South African)**

*Nesting #4, 2023*

Archival pigment print, collage

15 x 12 inches

Smai-1560-C

### HOWIE LEE WEISS



**Howie Lee Weiss (b. 1953, American)**

*From the Ensemble Series, Landscape, 2019-2023*

Vine charcoal on paper

Paper: 7.25 x 6.5 inches

Frame: 12.56 x 11.94 inches

Weis-1038-C



**Howie Lee Weiss (b. 1953, American)**

*From the Ensemble Series, Landscape, 2019-2023*

Vine charcoal on paper

Paper: 7.25 x 6.5 inches

Frame: 12.56 x 11.94 inches

Weis-1035-C



**Howie Lee Weiss (b. 1953, American)**

*From the Ensemble Series, Landscape, 2019-2023*

Vine charcoal on paper

Paper: 7.25 x 6.5 inches

Frame: 12.56 x 11.94 inches

Weis-1034-C